

Eimeriosis in Small Ruminants in Basrah Province/Southern Iraq

AUTHORSDetail

Hanaa A Shaheed¹ and Prof. Dr. Suzan A Al-Aziz²

¹College of Health and Medical Technologies, AhlulBait University.

²Department of Microbiology and Parasitology- College of Veterinary Medicine- University of Basrah- Iraq

*Corresponding author: suzan.azizz@uobasrah.edu.iq

Received: Sept 26, 2022

Accepted: Dec 17, 2022

INTRODUCTION

Livestock is one of the most important sources of the economy for any country. So, it is necessary to ensure the good health of animals, their development and prosperity and to preserve it from wasting and death. This is only possible by the periodic examination to ensure that it is free from bacterial, viral and parasitic diseases and focus on giving vaccines on time. Parasitic infections among small ruminants play a significant role in animal death and productivity, and *Eimeria* is one of the parasitic protozoa with a wide spread epidemiology among all animals, including small ruminants. The rates of its spread among animals have increased recently, and the reason for this is the spread of random grazing and the dependence of shepherds on feed from contaminated sources. Another reason for the increased infection is the mixing of animals in the same barns and lack of ventilation leading to the massive spread of sporozoites and emergence of new species that did not exist previously. Therefore, it is necessary to give the the utmost importance to this subject, and to follow up on the frequency of *Eimeria* between this region, and to find solutions to eliminate the parasitic infection. The emergence of new types of *Eimeria* was noted when it was detected at the molecular level. Formerly, eimeriosis was thought to be caused by the obligatory intestine intracellular apicomplexan protozoan parasite *Eimeria spp.* (Yakhchali and Rezaei 2010). The disease rapidly spread throughout the world and afflicted many animals, costing both individual farmers and the ovine business very badly (Reeg et al. 2005). *Eimeria spp.* is a parasite that infect several domestic animals, with the site of infection being the gut and occasionally other organs, including the liver and kidney (Levine 1973). Taxonomically, *Eimeriaspp.* has been placed in the *Eimeriidae* family including more than 1,000 species and

the genus *Eimeria* comprising the majority of species affecting domestic animals as well as birds. There is total 15 species known to infect the sheep, however, *Eimeria (E.) ovinoidalis* and *E. crandallis* are the two most dangerous species (Catchpole et al.2000). There are 17 species known to have been found in goats, although the pathogenic species *E. arloingi* and *E. ninakohlyakimovae* are particularly common (Cavalcante et al. 2012). In life cycle, Oocysts are excreted in the faeces of infected animals and require favourable environmental conditions, such as temperature > 15°C and relative humidity > 80%, to mature into Sporulated oocysts that are capable of infecting other animals in the same field (Dauguschies and Najdrowski 2005). Additionally, the principal route of transmission of disease between animals is through the ingestion of contaminated food and water containing oocysts (Fitzgerald 1980).

Historical Preview

The first discovery of *Eimeria spp.* was documented in 1674 by Antonie Van LeevenHook, who examined parasitic cysts in gall bladder ofrabbits. Then, schizogonous stages was descript by Schneider in 1875.Later, avian *Eimeria* oocysts was described by Leuckartin 1879.Schaudinn documented the whole life cycle of the parasite in 1900; thereafter, *Eimeria* was regarded as a distinct species from Eimerian, and the term *Eimeria* was first recorded in 1902 by Stiles and Liihe. The first discovery of *Eimeria spp.* in goats was documented by Marotelin 1905, who give it the name *Coccidiaumarloingi* having the Micropyle. The pathogenic aspects were clearly described by Johnson in 1930 and Tyzzeret al. 1932 (Soulsby 1974).

*Eimeria spp.*in Sheep and Goats

Different species of *Eimeria* found and describe in sheep and goats around the world (Sweeny et al. 2011). In sheep, Fifteen species of *Eimeria* was described by Soulsby (1982), like: *E. ahsata*was described by Honess(1942), *E. ovina* by Levine and Ivens (1970), *E. ovinoidalis*by by Yakimoff (1933), *E. crandallis* by Honess(1942), *E. faurei* by Moussuand Marotel(1902),*E. gilruthi*by Martin (1909) and Chatton (1910), *E. gonzaelzi*by Reichenowand Carini (1937), *E. granulosa* by Christensen (1938), *E. hawkinsi* by Ray (1952), *E. intricata* by Spiegl (1925), *E. pallida* by Christensen (1938), *E. parva* by Kotlân et al. (1951), *E. punctate* by Landers (1955) and *E. weybridgensis* by Norton and catchpole (1976). There are several species of goats have also been reported including *E. ninakohlyakimovae*, *E. hirci*, *E. caprina*, *E. caprovina*, *E. alijevei*, *E. africensis*, *E.*

Eimeriosis in Small Ruminants

christenseni, *E. punctatae*, *E. kocharli*, *E. jolchijevi*, *E. apshronica*, *E. capralis*, *E. masseyensis*, *E. charlstoni*, *E. minasnsis* and *E. arloingi*. *E. arloingi* and *E. ninakohlyakimovae* are considered as the highly prevalent pathogenic species (Silva and Lima 1998; Chartier and Paraud 2012). In Iraq Leiper (1957) first documented the *Eimeria* spp. in sheep, then Mirza (1970) recorded *E. ahsata*, *E. ninakohlyakimovan*, *E. intricate*, *E. faurei*, *E. carandailis*, *E. parva* and *E. granuolosa*. *E. ovinoidalis* and *E. Pallida* was first mentioned by Yakob et al. (1989).

Geographical Distribution and Prevalence

Eimeria has a worldwide distribution in sheep and goats, and it is difficult to define a specific geographical split between a single or numerous genus and species. As a result, sporadic occurrences of a single species with severe pathogenic consequences have been seen. Otherwise, some species have no pathogenic effect under normal conditions, and several publications have documented the occurrence of *Eimeria* spp. in sheep and goats around the world. Factors such as management, sanitary conditions, temperature, agroecology, climatic and environmental conditions, and the immunological response of the host, dosage of infection, and sampling duration can all affect the occurrence and distribution of Eimeriosis in different places (Khodakaram-Tafti and Hashemnia 2017).

In Poland, 4.6-60% prevalence of *Eimeriaspp.* was recorded in sheep (Gorski et al. 2004), whereas in Austria the prevalence was 97-100% (Platzer et al. 2005), 43.1% (Reeg et al. 2005) and 37.61% (Hashemnia et al. 2014) and 74.8% prevalence was reported in Brazil (Berto et al. 2013). China, Zimbabwe, and Egypt recorded 91.5% in adult sheep and lambs, respectively (Kaya 2004; Yakhchali and Golami 2008; Mohamaden et al. 2018). In USA the prevalence of *Eimeriaspp.* in goat was 97% (Kahan and Greiner 2013), while in India it was 96.66% (Kaur et al. 2017), 65.07% in Egypt (Mohamaden et al. 2018), 55.99% in Pakistan (Rehman et al. 2011) and 73.91% in Brazil, respectively (Macedo et al. 2019).

In Iraq, distribution of *Eimeria* spp. varies according to the periods, regions and breed of sheep and goats. In Baghdad province the prevalence in sheep with Eimeriosis was 79.09% (Abd Al-Wahab, 2003), while, in Diwaniya province it was reached to 1% in lambs as recorded by Dawood et al. (2008). On the other hand, Kalef and Fadl (2011) reported a prevalence rate of 49% in Baghdad province and Mohammed (2013) reported a prevalence rate of 67.5% in sheep in AlMuthana province. In Diyala province, the infection rate of 86.09% was recorded in sheep and 87.30% in goat (Mineet 2014), while Al-Sadoon (2018) recorded a prevalence rate of 84.16% in sheep in Wasit province. The rate of infection with *Eimeriaspp.* was affected by the way the farm was run and the number of cases of was found lower in large and closed farms. This did not necessarily mean that these farms had intensive systems, but it's likely

because these farms used stricter hygiene measures and de-parasitization methods. Other factors, like differences in immunological competence due to differences in nutritional status, could have also played a role (Knox and Steel 1996). Furthermore, inadequate hygienic sanitation may be regarded as a risk factor for Eimeriosis, as it can increase the duration and amount of infection/exposure and the incidence of infection owing to contaminated food and water. Furthermore, stress may also promote immunosuppressant conditions. The presence of non-cemented floors, a closed housing system, and a large herd size, resulted in the greater contamination of overcrowded animals and feeding and watering troughs (Altaf and Hidayatua 2014). Furthermore, there may be statistically significant differences between a body condition score and *Eimeriaspp.* infection; for example, Khan et al. (2011) found a greater infection rate in sheep with low body ratings compared to those with superior body ratings. On the other hand, there are positive connections between conditions such as temperature and the severity of infection in semiarid and subhumid regions (Balicka-Ramisz 1999). This correlation might be related to the effect of temperature on *Eimeriaspp.* sporulation rates (Graat et al. 1994). This correlation explained that temperature effect on sporulation rates of the *Eimeria* spp. (Graat et al. 1994). The breed susceptibility differences also affect the *Eimeria* spp. infection. Indigenous goats in Zimbabwe were found to be resistant to Eimeriosis, while Angora and wild goats were found to be more likely to get clinical Eimeriosis than dairy breeds goats (Chhabra and Pandey 1991).

Pathogenicity

Many factors affecting on the Pathogenicity of *Eimeria* such as the dose of oocysts ingestion, host cells destruction, location of parasite in host tissues, stage of infection, general condition and age of host, and degree of immunity which may be acquired or natural (Kaneko et al. 2008; Moret et al. 2011). Gregory et al. (1983) looked at sheep that had been infected with *E. crandallis* and *E. bakuensis*. They found that these parasites can cause the host cell to go through mitosis and can sometimes divide at the same time as the host cell. During an *E. crandallis* infection, parasites can also divide continuously at the same time along with the epithelial cells of the host. Cox (2009) discovered that heavy *Eimeria* spp. infections result in schizonts found in mucosa and submucosa cells with high destruction and haemorrhage when compared to light infections that affect intestinal mucosa with local absorption. On the other hand, some *Eimeriaspp.* infections resulted in superficial development with villi atrophy, that might be due to a decrease in epithelial cell lifetime and the surface area accessible for absorption, resulting in a lower feed efficiency. Typically, infection with different species of *Eimeria* at same time was common in the field and cause a severe pathological effects (Blood and Radostitis 1989).

Catchpole et al. (1975) detected that mixed *Eimeriaspp.* infection in sheep resulted in prolonged patency and increased oocyst production with or without clinical signs. In general, *E. ovinoidalis* is regarded as one of the most virulent species in sheep (Gregory et al. 1989; Abakar 1996). In goats, *E. arloingi* and *E. ninakohlyakimovae* are the most common pathogenic species (Cavalcante et al. 2012). Stress and environmental variables are key predisposing factors in *Eimeria* pathogenesis, and a research has shown that these factors are linked to recurrent outbreaks of Eimeriosis (Gul 2007). Sometimes lambs and kids that treated with corticosteroids can convert subclinical infections to acute clinical infection (Gasmir 2005). On the other hand, schizonts growth cause damage in the caecum, which cause most numerous and mucosal polyps in sheep (Taylor and Catchpole 1994).

Clinical Signs

Different experimental studies showed different clinical signs in lambs and kids infected with Eimeriosis without prominent differences when used inoculated doses (Dai et al. 2006). The initial clinical symptom of Eimeriosis infection include the abrupt acute diarrhoea with bad odours and stools including mucus and blood, as along with an increasing loss of body weight (Blood and Radostitis 1989). According to a study, pale mucous membranes, weakness, staggering, dyspnea, dehydration, and recumbency were also reported in diseased animals (Mohamed et al. 1990). While Abakar (1996) noted an appetite, dullness, pale mucous membranes, and minor pyrexia as clinical indications of acute Eimeriosis, leading to a disruption of the digestive system resulted in the release of water, electrolytes, and protein (Reid et al. 2012). Several lambs may eventually die on dehydration because of diarrhea and loss of appetite while, some lambs die with profuse watery diarrhea (Taylor et al. 2007).

Diagnosis

Eimeriosis may be diagnosed in sheep and goats based on a case history, clinical indicators, gross lesions, necropsy results, and microscopic analysis of faeces by flotation method using various flotation liquids. So, a necropsy and recognized schizonts in lesions make a positive diagnosis (Levine 1973). In the acute phase of Eimeriosis, the presence of a large number of sporozoites may lead to the tissue loss, resulting in the formation of merozoites that are failed to locate and invade new cells in order to grow before any oocysts form (Gregory et al. 1983). Typically, *Eimeria* can easily be diagnosed through faecal examination using flotation technique (Levine 1961; Menezes and Lopes 1995).

Molecular Characterization of *Eimeria spp.*

The use of available tools in molecular biology is important to detect any parasitic infection that may infect human and

animals and is important in modern Veterinary Diagnostic Parasitology comparing with the techniques used in past (Zarlenga and Higgins 2001). So, in the past, studies that looked for *Eimeriaspp.* used either traditional characteristics or a combination of traditional characteristics and other methods, such as the electrophoretic variation of enzymes in avian *Eimeriaspp.*, which uses variation in DNA sequences. The PCR-based assay has also been described, which could be used to identify *Eimeria spp.* (Viljoen and Nel 2002). The development of novel DNA-based diagnostic tests might expedite and simplify the identification of *Eimeriaspp.*, while the application of the PCR technique is changing the detection of pathogens (Erlich et al. 1991). According to Al-Sadoon (2018), the molecular study revealed the highest infection rate of *Eimeria spp.* of sheep at Wasit-province, Iraq via PCR on sheep faecal samples (84.16%), and phylogenetic tree analysis of the common four *Eimeria* species (*E. ovinoidalis*, *E. crandallis*, *E. ahsata*, and *E. weybridgensis*) has been disclosed employing multiplex PCR. The total infection rate of *Eimeria spp.* through PCR analysis showed a significant increase between species and included 57.42% positive samples, with *E. ahsata* having a higher infection rate (53.44%) followed by *E. ovinoidalis* (29.31%), *E. weybridgensis* (12.93%) and *E. crandallis* (4.31%), respectively.

Molecular characterization of *Eimeria spp.* by Shaheed (2021) in Basrah Province, Iraq

This study found eleven *Eimeria spp.* in sheep and six *Eimeria* species in goats, respectively. This recognition depends on the shape and structure of isolated oocysts under microscope as: *E. ovinoidalis*, *E. crandallis*, *E. ahsata*, *E. weybridgensis*, *E. bakuensis* (ovine), *E. intricata*, *E. faurei*, *E. pallida*, *E. granulosa*, *E. parva* and *E. marsicain* sheep, while *E. arloingi*, *E. ninakohlakimovae*, *E. hirci*, *E. christenseni*, *E. aspheronica* and *E. capralisin* goats. Sporulation time of isolated oocysts was recorded by using Sugar solution in flotation, maturation, growth and diagnosis of *Eimeria* as a substitute method to potassium dichromate and formalin, that usually use in sporulation of *Eimeria spp.* The sugar is known as a nutritional substance with no caution or side effects compared to the potassium dichromate which is a carcinogenic substance while the formalin is also reported to be a harmful chemical to the human respiratory system. The results were astonished by using the sugar solution, as the rate of sporulation was estimated of 100% compared to the potassium dichromate which was observed giving a lower rate of only 30% of sporulation. In addition, the characteristic of *Eimeria* were very clear as a cyst that sporulated in the sugar solution compared to the cysts where sporulated in the potassium dichromate which was unclear under light microscope. The time of sporulation was continued from 1 day to 5 weeks with sugar solution, in comparison to 7 to 12 days with potassium dichromate. The result showed *E. bakuensis* and

Eimeriosis in Small Ruminants

E. parva of sheep and *E. arloingi*, *E. ninakohlakimovae*, *E. hirci*, *E. christenseni*, *E. capralis* of goats need three days or more to begin sporulation, while the other *Eimeria* species need less than three days to begin sporulation. According to the result of phylogenetic analysis there were nine *Eimeria* spp. recognized from twenty-five PCR positive fecal sample of sheep. *E. ovinoidalis*, *E. ahsata*, *E. crandallis*, *Eimeria* spp. voucher and *E. bovis* infected the cattle, *E. hirci* and *E. christenseni* infected the goats and *Eimeria labbeana*-like infected the birds and were recorded as a new species, and sheep infected with nonspecific species which was first record as a new species of *Eimeria* at Basrah province. It can be noticed that all isolates of *Eimeriaspp.* showed 92.54-99.51% similar identity with *Eimeriaspp.* isolated from different countries and recorded in GenBank, and it showed close association with the isolates detected from Iran and Jordon.

A- Evolutionary Relationships of *Eimeria* spp. Isolated in Basrah Province, Iraq

The Neighbor-Joining method was applied to generate an estimate of the evolutionary history of the taxa that were investigated, and the bootstrap consensus tree that was derived from 500 different iterations of the analysis was selected in order to symbolize the evolutionary history of the species. When a bootstrap replicate is done, branches that belong to partitions that haven't been replicated in more than 50% of them are collapsed. Next to the branches are the percentages of duplicate trees in which related taxa were grouped together in the bootstrap test (500 times). The evolutionary distances were calculated using the Jukes-Cantor method. The research used 24 nucleotide sequences with codon locations 1st+2nd+3rd+Noncoding in units of the number of base substitutions per site. All spots with blanks or missing information were taken out. In the end, there were a total of 268 locations in the dataset. MEGA7 was used to do an analysis of evolution. Fig. 1 shows phylogenetic analysis of *Eimeria* spp. isolated from small ruminants by using bootstrap consensus tree and Fig. 2 shows phylogenetic tree by using Neighbor-Joining method. Molecularly, all species found and recorded for the first time in Basrah province by using novel primers. Likewise, the normal host of *E. labbeana* are birds but it was isolated from sheep showing greater similarity with other strain submitted at GenBank from Iran, Jordon and Turkey. The results showed that these were neighboring countries and movement of animal in these countries by following import and export laws allowed the transmission of *Eimeria* and other parasitic infections. The evolutionary history of the studied taxa was figured out by using Neighbor-Joining method (Saitou and Nei 1987). The history of detected isolates was shown by the bootstrap consensus tree figured out from 500 replicates (Felsenstein 1985) and evolutionary distances were found using the Jukes-Cantor method (Jukes

and Cantor 1969). Table 1 shows the percent identity of detected isolates with sequences available in GenBank.

B- *Eimeria* species detected in sheep

***Eimeria ovinoidalis*:** Oocysts with an ellipsoidal form, smooth wall, colourless to pale-yellow, no polar cap, present inconspicuous micropyle, mean size $26.5 \pm 0.8 \times 20.3 \pm 0.8$ having range $27.5 - 20 \times 21.5 - 15$ μm with sporulation period 1-3 days (Fig. 3).

***Eimeria crandallis*:** Oocysts are subspherical to broadly ellipsoidal shape and has smooth wall, with a micropyle, which may be distinct or indistinct and a micropylar cap, pale yellowish in color. Mean size $25.0 \pm 1.1 \times 19.1 \pm 0.8$ having range $27.5 - 18.5$ \times $(20 - 12.5$ μm and 1-3 days as sporulation time (Fig. 3).

***Eimeria weybridgensis*:** Oocysts are ellipsoidal to subspherical shape, a smooth wall, colorless or pale yellow. micropyle and polar cap present, mean size $31.0 \pm 1.5 \times 20 \pm 0.7$, with range $34.5 - 24.5 \times 24 - 20$ μm , and 1-3 days as sporulation time (Fig. 4).

***Eimeria parva*:** Oocyst's shape is spherical to subspherical, smooth wall colorless to pale yellow, Polar cap absent, Micropyle absent, mean size $18.9 \pm 1.0 \times 15.6 \pm 1.0$, with range $22 - 10 \times 18 - 7.5$ μm and 3-5 days as sporulation time (Fig. 4).

***Eimeria ahsata*:** Oocysts are ellipsoidal shape, a smooth wallyellowish brown color, with distinct polar cap, and micropyle. mean size $36.4 \pm 1.8 \times 24.1 \pm 1.3$, with range $42.5 - 27.5 \times 25 - 22.5$ μm and 2-3 days as sporulation time (Fig. 5).

***Eimeria faurei*:** Oocyst is oval, pale-yellowish-brown in colour, coated with a smooth layer, no polar cap and prominent micropyle, mean size $32.1 \pm 0.6 \times 23.2 \pm 0.7$, with range $37 - 22.5 \times 27 - 20$ μm and sporulation period 1-3 days (Fig. 5).

***Eimeria bakuensis*:** Oocysts are ellipsoidal shape, pale yellowish brown, micropyle and micropylar cap present, sporozoites lying head to tail in sporocyst, mean size $31.4 \pm 0.9 \times 18.9 \pm 0.6$, with range $36 - 20 \times 24 - 15$ μm , and 2-4 days as sporulation time (Fig. 6).

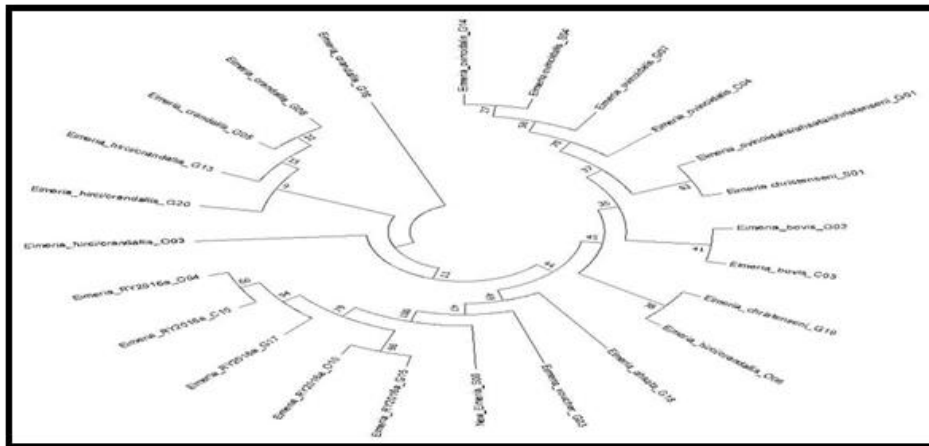
***Eimeria marsica*:** Oocysts are ellipsoidal shape, colorless slightly greyish or pale yellow with smooth wall, with micropyle (indistinct) which may have an inconspicuous micropylar cap, mean size $22.7 \pm 0.4 \times 15.7 \pm 0.7$, with range $22.5 - 18.5 \times 15 - 8$ μm and 3 days as sporulation time (Fig. 6).

***Eimeria intricata*:** Oocyst are ellipsoidal shape or slightly ovoid, brownish yellow to dark brown in color, with thick wall that is granular and transversely striated, micropyle in the outer layer, a micropylar cap, mean size $48.0 \pm 2.3 \times 37.7 \pm 1.8$, with range $56 - 40 \times 41 - 30$ μm , and 1-3 days as sporulation time. (Fig. 7).

***Eimeria granulosa*:** Oocysts are urn-shaped, with a large microple and micropylar cap at the broad end, yellowish-brown in color with two smooth layers, mean size $33.6 \pm 1.4 \times 22.1 \pm 1.4$, with range $35 - 22 \times 25 - 17.5$ μm , and 1-2 days as sporulation time. (Fig. 7).

Table 1: Sequence identity with Accession number of strain in GenBank

	Student code	Sequence code	Identity	<i>Eimeria</i> spp.	Accession number At GenBank
1	G2	C2	92.45%	<i>Eimeria bovis</i> HS02; HS18	MZ562402.1 MZ562419.1
2	G18	M2	93.30%	<i>Eimeria ahsata</i> HS06; HS01	MZ562403.1 MZ562406.1
3	G6	M3	99.28%	<i>Eimeria crandallis</i> HS03; HS10; HS16	MZ562407.1 MZ562412.1 MZ562417.1
4	G16	M4	99.28%	<i>Eimeria crandallis</i> HS07; HS08; HS09	MZ562409.1 MZ562410.1 MZ562411.1
5	G5	M5	99.05%	<i>Eimeria crandallis</i> HS21	MZ562421.1
6	G19	M11	98.02%	<i>Eimeria christensenii</i> HS17	MZ562418.1
7	G20	M12	99.46%	<i>Eimeria hirci</i> HS11	MZ562413.1
8	G12	M13	99.01%	<i>Eimeria christensenii</i> HS23	MZ562405.1
9	C3	M14	97.98%	<i>Eimeria faure</i> HS05	MZ562408.1
10	C4	M15	98.47%	<i>Eimeria ovinoidalis</i> HS12	MZ562414.1
11	O6	M17	96.92%	<i>Eimeria</i> sp. RY-2016a HS04; HS13; HS14; HS20; HS22	MZ562400.1 MZ562401.1 MZ562415.1 MZ562420.1 MZ562422.1
12	S1	M19	93.80%	<i>Eimeria christensenii</i> HS15	MZ562416.1
13	S4	M20	99.28%	<i>Eimeria ovinoidalis</i> HS19; HS24	MZ562404.1 MZ562423.1

**Fig. 1:** Phylogenetic tree analysis (bootstrap consensus tree)

***Eimeria pallida*:** Oocysts are ellipsoidal, smooth wall colorless to pale yellow or yellowish green, Polar cap absent, Micropyle absent, mean size $19.8 \pm 0.6 \times 16.8 \pm 1.2$, with range $20-12 \times 15-8 \mu\text{m}$, and 1-3 days as sporulation time (Fig. 8).

***Eimeria* Species Detected in Goats**

***Eimeria ninakholyakimovae*:** Oocysts are ellipsoidal or slightly subspherical, thin-walled, colorless, without micropyle or micropyle cap mean size $23.5 \pm 1.0 \times 16.0 \pm 1.2$, with range $24.3-20 \times 19.5-14 \mu\text{m}$ and sporulation time is 1-4 days (Fig. 9).

***Eimeria christensenii*:** The oocysts are ovoid or ellipsoidal, colorless to pale yellow, with a micropyle and micropyle cap. mean size $30.1 \pm 1.6 \times 17.1 \pm 0.3$, with range $44-27 \times 31-17 \mu\text{m}$ and sporulation time is 3-6 days (Fig. 9).

***Eimeria aspheronica*:** Oocysts are ovoid, greenish to yellow brown, with a micropyle but without a micropyle cap, mean size $24.6 \pm 0.3 \times 17.5 \pm 1.2$, with range $37-24 \times 26-18 \mu\text{m}$, and sporulation time is 1-2 days (Fig. 10).

***Eimeria hirci*:** Oocysts are ellipsoidal to subspherical, light brown to brownish yellow, with a micropyle and micropyle cap, mean size $22.8 \pm 0.3 \times 14.2 \pm 1.1$, with range $23-18 \times 19-14 \mu\text{m}$, and sporulation time is 1-3 days (Fig. 10).

***Eimeria arloingi*:** Oocysts are ellipsoidal or slightly ovoid, with a thick wall. a micropyle and micropyle cap present, mean size $29.2 \pm 1.6 \times 17.1 \pm 1.1$, with range $42-17 \times 19-14 \mu\text{m}$ and sporulation time is 1-4 days (Fig. 11).

***Eimeria capralis*:** Oocysts are ellipsoidal with a distinct micropyle cap, but without micropyle having mean size $29.5 \pm 1.5 \times 19.6 \pm 0.3$, with range $34-25 \times 24.5-19.5 \mu\text{m}$ and 5 days as sporulation time (Fig. 11).

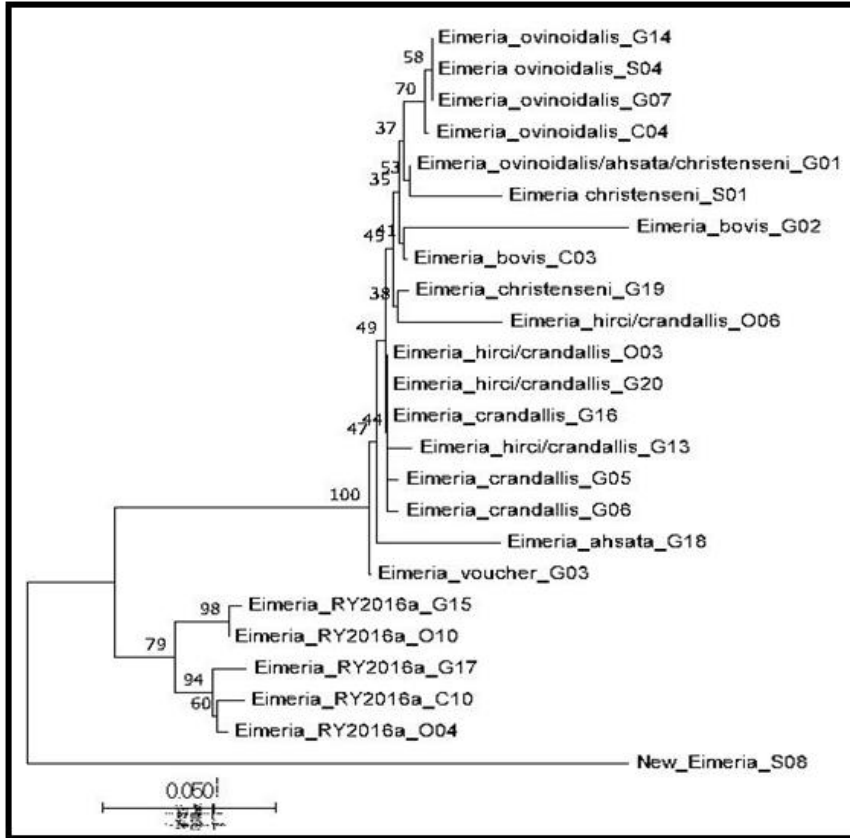


Fig. 2: Phylogenetic tree analysis (Neighbor-Joining method)

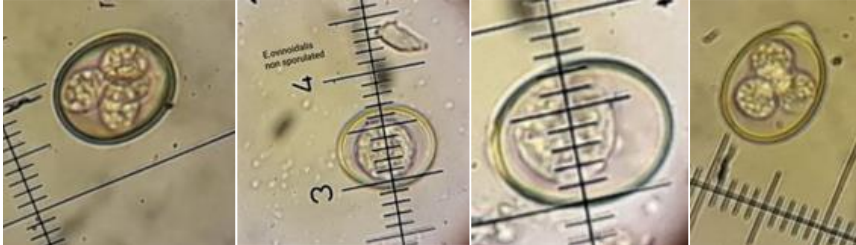


Fig. 3: Sporulated and non sporulated Oocyst of *E. ovinoidalis* and *E. cran*

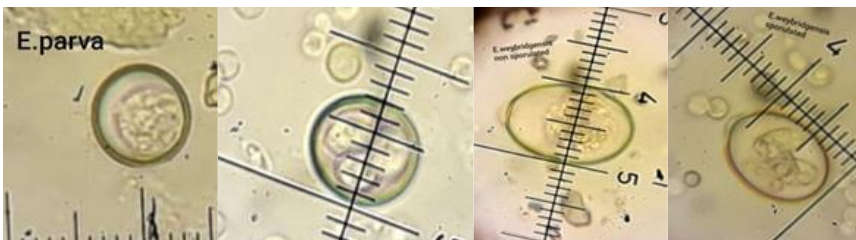


Fig. 4: Sporulated and non sporulated Oocyst of *E. parva* and *E. weybridgei* (40X)

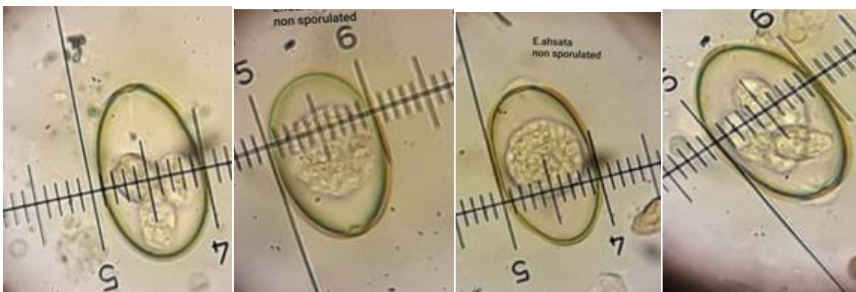


Fig. 5: Sporulated and non sporulated Oocyst of *E. faurei* and *E. ahsata* (40X)

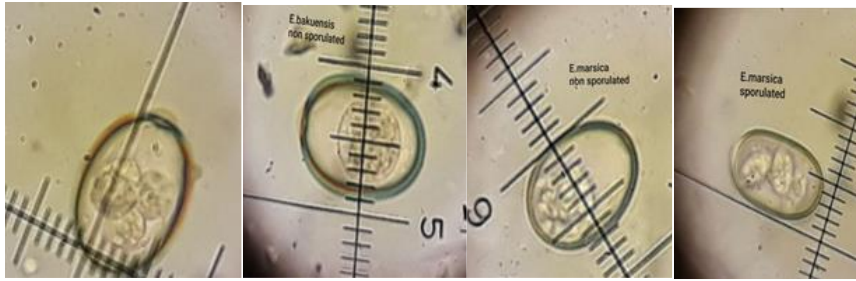


Fig. 6: Sporulated and non sporulated Oocyst of *E. bakuensis* and *E. marsica* (40X)

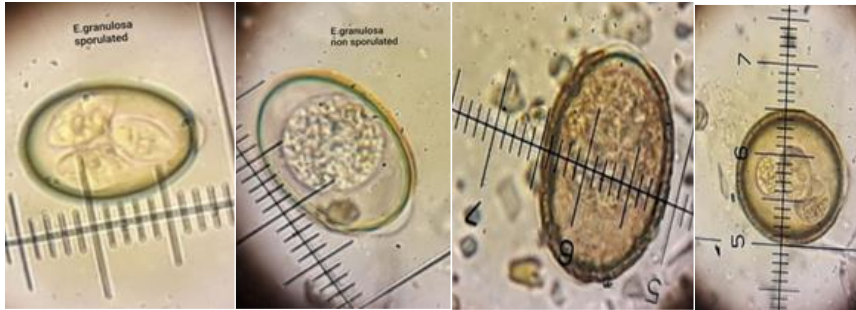


Fig. 7: Sporulated and non sporulated Oocyst of *E. granulosa* and *E. intricata* (40X).

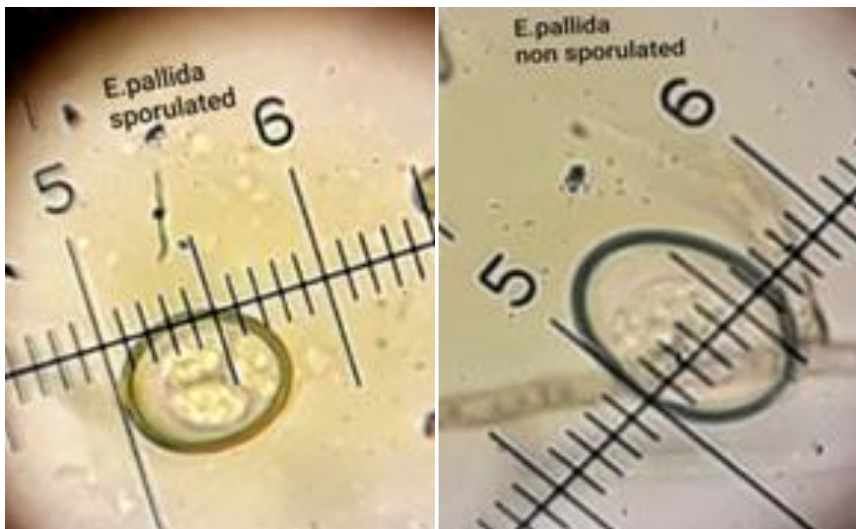


Fig. 8: Sporulated and non sporulated Oocyst of *E. pallida* (40X)



Fig. 9: Sporulated and non sporulated Oocyst of *E. christenseni* and *E. ninakohlyakimovae* (40X)

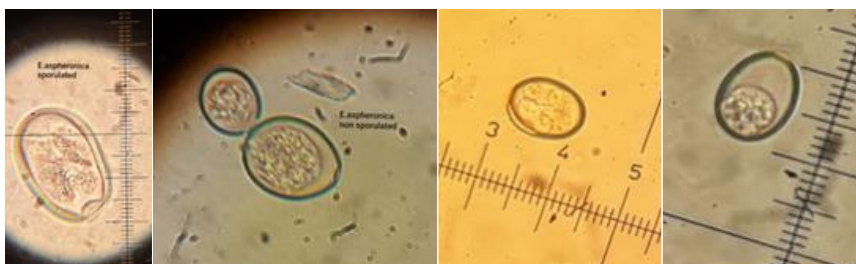


Fig. 10: Sporulated (100X) and non sporulated (40X) Oocyst of *E. aspheronica* and *E. hirci* (40X)

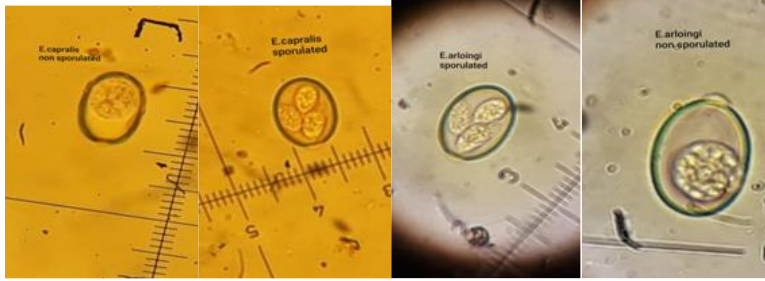


Fig. 11: Sporulated and non sporulated Oocyst of *E. capralis* and *E. arloingi*(40X)

REFERENCES

- Abakar AD, 1996. Coccidia and coccidiosis of sheep in the Sudan. PhD Dissertation, University of Khartoum.
- Abd Al-Wahab IH, 2003. Study in the epidemiology of the Intestinal Protozoa (*Eimeria* spp., *Cryptosporidium* spp., *Giardia* spp.) in the Sheep in Baghdad Province. Master's Thesis, College of Veterinary Medicine, University of Baghdad.
- Al-Sadoon ZM, 2018. Morphological and Molecular study of *Eimeria* spp. in sheep in Wasit province. PhD Dissertation, College of Veterinary Medicine, University of Baghdad.
- Altaf AR and Hidayatu A, 2014. Study of some potential risk factors associated with coccidia in sheep. *Journal of Agriculture and Veterinary Science* 65: 11-13.
- Balicka-Ramis A, 1999. Studies on coccidiosis in goats in Poland. *Veterinary Parasitology* 81: 347-349.
- Berto BP et al., 2013. *Eimeria* spp. from Japanese quails (*Coturnix japonica*): new characteristic features and diagnostic tools. *Pesquisa Veterinaria Brasileira* 33(12): 1441-1447.
- Blood DC and Radostitis OM 1989. *Veterinary Medicine, Textbook of the Disease of Cattle, Sheep, Pigs, Goats, and Horses*, 7th Ed., Oxford University Press, UK.
- Catchpole J et al., 1975. The occurrence of *Eimeria weybridgei* and other species of coccidia in lambs in England and Wales. *British Veterinary Journal* 131(4): 392-401.
- Catchpole JC et al., 2000. Immunisation of lambs against coccidiosis. *Veterinary Research* 31: 56-59.
- Cavalcante ACR et al., 2012. *Eimeria* species in dairy goats in Brazil. *Veterinary Parasitology* 183: 356-358.
- Chartier C and Paraud C, 2012. Coccidiosis due to *Eimeria* in sheep and goats, a review. *Small Ruminant Research* 103: 84-92.
- Chatton E, 1910. *Gastrocystis gilruthi* sp. *Bulletin Society of Zoology France* 35: 197-198.
- Chhabra RC and Pandey VS, 1991. Coccidia of goats in Zimbabwe. *Veterinary Parasitology* 39: 199-205.
- Christensen JF, 1938. Species differentiation in the coccidia from the domestic sheep. *Journal of Parasitology* 1938: 453-467.
- Cox FEG, 2009. *Modern Parasitology: A textbook of parasitology*, John Wiley and Sons, Hoboken, New Jersey, USA.
- Dai YB et al., 2006. Pathogenic Effects of The Coccidium *Eimeria ninakohlyakimovae* in goats. *Veterinary Research Communication* 30: 149-160.
- Dauguschies A and Najdrowski M, 2005. Eimeriosis in cattle: Current understanding. *Journal of Veterinary Medicine* 52: 417-427.
- Dawood KA et al., 2008. Pathological study of lamb coccidiosis in Diwaniya. *Al-Qadisiya Journal of Veterinary Science* 7(1): 72-75.
- Erlich HA et al., 1991. Recent advance in the polymerase chain reaction. *Science* 252: 1643-1651.
- Felsenstein J, 1985. Confidence limits on phylogenies: An approach using the bootstrap. *Evolution* 39: 783-791.
- Fitzgerald PR, 1980. The economic impact of coccidiosis in domestic animals. *Advances of Veterinary Medicine and Comparative Medicine* 24: 121-143.
- Gasmir, 2005. Cited in Survey on *Eimeria* spp. infecting Sheep in the Red Sea State, Eastern Sudan 50-1736.
- Gorski P et al., 2004. Prevalence of protozoan and helminth internal parasite infections in goat and sheep flocks in Poland. *Archiv Fur Tierzucht* 47(6): 43-49.
- Graat EA et al., 1994. Rate and Course of Sporulation of Oocysts of *Eimeria acervulina* Under Different Environmental Conditions. *Parasitology* 108: 497-502.
- Gregory MW and Catchpole J, 1989. Ovine coccidiosis: heavy infection in young lambs increases resistance without causing disease. *The Veterinary Record* 124(17): 458-461.
- Gregory MW et al., 1983. Observations on the epidemiology of coccidial infections in sheep under varying conditions of intensive husbandry including chemoprophylaxis with monensin. *Parasitology* 87(3): 421-427.
- Gul A, 2007. The Prevalence of *Eimeria* Species in Goats in Igdir. *Turkish Journal of Veterinary and Animal Science* 31: 411-414.
- Hashemnia M et al., 2014. Prevalence and intensity of *Eimeria* infection in sheep in Western Iran. *International Journal of Livestock Research* 4(1): 107-112.
- Honess RF, 1942. Coccidia infesting the Rocky Mountain bighorn sheep in Wyoming, with descriptions of two new species. *Bulletin of University of Wyoming Agriculture* 1942: 28.
- Johnson WT, 1930. Directors Biennial Report, The Oregon Agricultural Experiment Station (OAES) 1928-1930.
- Jukes TH and Cantor CR, 1969. Evolution of protein molecules. In Munro HN, editor, *Mammalian Protein Metabolism*, pp. 21-132, Academic Press, New York.
- Khan MN et al., 2011. Prevalence and associated risk factors of *Eimeria* in Sheep of Punjab, Pakistan. *World Acad, Sci, Eng, Tech*, 5, 334-338.
- Kahan TB and Greiner EC, 2013. Coccidiosis of Goats in Florida, USA. *Open Journal of Veterinary Medicine* 3: 209-212.
- Kalef DA and Fadl SR, 2011. Prevalence of parasitic infection in Sheep from different Regions in Baghdad. *The Iraqi Journal of Veterinary Medicine* 35(1): 204-209.
- Kaneko JJ et al., 2008. *Clinical biochemistry of domestic animals*, Academic press, Cambridge, Massachusetts, USA.
- Kaur S et al., 2017. Coccidiosis in goats: pathological observation on intestinal developmental stages and anticoccidial efficacy of amprolium. *Indian Journal of Veterinary Research* 34(1): 1-5.
- Kaya G, 2004. Prevalence of *Eimeria* Species in Lambs in Antakya Province. *Turkish Journal of Veterinary and Animal Science* 28: 687-692.

- Khodakaram-Tafti A and Hashemnia M, 2017. An overview of intestinal coccidiosis in sheep and goats. *Revue Médecine Vétérinaire* 168: 1-3.
- Knox M and Steel J, 1996. Nutritional enhancement of parasite control in small ruminant production systems in developing countries of south-east Asia and Pacific. *International Journal of Parasitology* 26: 963-970.
- Kotlán A et al., 1951. Experimentelle Studien über die Kokzidiose der Schafe. 1. Die endogene Entwicklung von *Eimeria parva* (A study of coccidiosis in sheep and of tissue stages of development of *E. parva*). *Acta Veterinaria Hungarica* 1: 317-331.
- Landers EJ, 1955. *Eimeria punctata* nov. sp. for *Eimeria honessi* Landers, 1952. *Preoccupied. J. Parasitol.* 41(1): 115-115.
- Leiper JR, 1957. Report to the Government of Iraq on animal parasites and their control. FAO Veterinary Experiment Report No. 610.
- Leuckart R, 1879. Die Parasiten des Menschen und die von ihnen herrührenden Krankheiten, 2nd Ed., Leipzig.
- Levine ND and Ivens V, 1970. The coccidial parasites (Protozoa, Sporozoa) of ruminants, University of Illinois Press, Urbana.
- Levine ND, 1961. Protozoan Parasites of Domestic Animals and of Man, Burgess Publishing Company, Minnesota, USA.
- Levine ND, 1973. Protozoan Parasites of Domestic Animals and of Man, 2nd Ed., Burgess Publishing Company, Minnesota, USA.
- Macedo LO et al., 2019. Morphological and epidemiological data on *Eimeria* species infecting small ruminants in Brazil. *Small Ruminant Research* 171: 37-41.
- Marotel G, 1905. La coccidiose de la chèvre et son parasite. *Bulletin Society of Veterinary Science*, Lyon.
- Martin A, 1909. Les coccidioses des animaux domestiques. *Revue de Médecine Vétérinaire* 66: 201-211, 273-285, 413-421.
- Menezes RCAA and Lopes CWG, 1995. Epizootiology of *Eimeria arloingi* in goats at microrregião Serrana Fluminense, state of Rio de Janeiro. *Brazil Life Science Journal* 17: 5-12.
- Mineet TR, 2014. Detection of gastrointestinal parasite infection of sheep and goats in Diyala province-Iraq. *AL-Qadisiya Journal for Veterinary Medicine Sciences* 13(2).
- Mirza YM, 1970. Incidence and distribution of coccidia (sporozoa: Eimeriidae) in mammals from Baghdad area. Master's Thesis, College of Veterinary Medicine, University of Baghdad.
- Mohamad WI et al., 2018. Prevalence of *Eimeria* species among sheep and goats in Suez Governorate, Egypt. *International Journal of Veterinary Science and Medicine* 6: 65-72.
- Mohamed ZA et al., 1990. Multiple infections with *Eimeria* species in chickens in Khartoum Province. *Sudan Journal of Veterinary Research and Animal Husbandry* 29(2): 31-35.
- Mohammed MM, 2013. Serological study of sheep of coccidiosis in Almutana, Kufa. *Journal for Veterinary Medical Sciences* 4(1).
- More BV et al., 2011. Percentage prevalence of eimerian species composition of sheep and goats from Beed district, Maharashtra. *Recent Research in Science and Technology* 3(8).
- Moussu G and Marotel G, 1902. La coccidiose du mouton et son parasite. *Archives of Parasitology* 6: 82-98.
- Norton CC and Catchpole J, 1976. The occurrence of *Eimeria marsica* in the domestic sheep in England and Wales. *Parasitology* 72(1): 111-114.
- Platzer B et al., 2005. Epidemiology of *Eimeria* infections in an Austrian milking sheep flock and control with diclazuril. *Veterinary Parasitology* 129(1-2): 1-9.
- Ray DK, 1952. On a new coccidium *Eimeria kawjensi* n. sp. from Indian sheep and goats. *Proceedings of the Indian National Science Academy* 1952: 314-315.
- Reeg KJ et al., 2005. Coccidial infections in housed lambs: oocyst excretion, antibody levels and genetic influences on the infection. *Veterinary Parasitology* 127(3-4): 209-219.
- Rehman TU et al., 2011. Epidemiology of *Eimeria* and associated risk factors in cattle of district Toba Tek Singh, Pakistan. *Parasitology Research* 108(5): 1171-1177.
- Reichenow E and Carini A, 1937. Über *Eimeria travassosi* und die Gattung *Globidium*. *Archiv für Protistenkunde* 88: 374-386.
- Reid AJ et al., 2012. Comparative genomics of the apicomplexan parasites *Toxoplasma gondii* and *Neospora caninum*: Coccidia differing in host range and transmission strategy. *PLoS Pathogens* 8(3): 567.
- Saitou N and Nei M, 1987. The neighbor-joining method: A new method for reconstructing phylogenetic trees. *Molecular Biology* 4: 406-425.
- Shaheed HA, 2021. Detection of *Eimeria* spp. in sheep and goats in some areas of Basrah Province, Southern Iraq. Master's Thesis, College of Veterinary Medicine, University of Basrah.
- Silva AC and Lima JD, 1998. *Eimeria minasensis* n. sp. (Apicomplexa: Eimeriidae) in the domestic goat *Capra hircus*, from Brazil. *Memo de Instituto Oswaldo Cruz* 93: 741-744.
- Soulsby E JL, 1974. Helminths, Arthropods and Protozoa of Domesticated Animals., 6th Ed., The Williams and Wilkins Company, Baltimore.
- Soulsby E JL, 1982. Helminths, Arthropods and Protozoa of Domesticated Animals, 7th Ed., Balliere, Tindall and Cassel, London.
- Spiegel A, 1925. Ein bisher nicht bekanntes Kokzid beim Schaf. *Z. Infekt. Haust.* 28: 42-46.
- Sweeny JPA et al., 2011. Longitudinal investigation of protozoan parasites in meat lamb farms in southern Western Australia. *Preventive Veterinary Medicine*, 101(3-4), 192-203.
- Taylor MA and Catchpole J, 1994. Review article: coccidiosis of domestic ruminants. *Applied Parasitology* 35: 73-86.
- Taylor MA et al., 2007. Parasites of the Integument. *Veterinary Parasitology*. Retrieved from www.BlackwellVet.com.
- Tyzzar EE et al., 1932. Coccidiosis in gallinaceous birds II. A comparative study of species of *Eimeria* of the chicken. *American Journal of Hygiene* 15: 319-393.
- Viljoen GJ and Nel LH, 2002. PCR methodology and diagnostic application for animal disease. FAO/IAEA. PCR biotechnology training course.
- Yakhchali M and Golami E, 2008. *Eimeria* infection (Coccidia: Eimeriidae) in sheep of different age groups in Sanandaj city, Iran. *Veterinarski Arhiv* 78: 57-64.
- Yakhchali M and Rezaei AA, 2010. The prevalence and intensity of *Eimeria* spp. infection in sheep of Malayer suburb, Iran. *Razi Vaccine and Serum Research Institute* (65)1: 27-32.
- Yakimoff WL, 1933. La coccidiose des animaux domestiques dans l'Azerbaïdjan (Transcaucasie). *Annal Society Beige Medicine Tropical* 13: 93-130.
- Yakob AY et al., 1989. Prevalence of *Eimeria* species of lambs in Baghdad area (Iraq). *Iraqi Journal of Veterinary Medicine and Science* 13: 137-145.
- Zarlenga DS and Higgins J, 2001. PCR as a diagnostic and quantitative technique in veterinary parasitology. *Veterinary Parasitology* 101(3-4): 215-230.